

# CONTRIBUTIONS TO THE DICOTYLEDONOUS PLANTS OF TAIWAN (2)

FU-YUAN LU\*

**[Abstract]**: Described as new taxa to Taiwan are 6 new species, 3 new varieties, 2 genera and 3 species of new record. Besides, the existence of two noteworthy species of *Jasminum*, which were formerly treated as uncertained ones, has also been confirmed here.

## 臺灣雙子葉植物新見(二)

呂福原\*

本文中記述台灣雙子葉植物之新分類群計有：六新種，三新變種，二新記錄屬及三新記錄種。此外，對山秀英屬中之二未定種亦予以確認。彼等之學名及新擬之中名如次

⊃新種及新變種：

- 1 灰葉懸鈎子, *Rubus arachnoideus* Y. C. Liu et F. Y. Lu (薔薇科)
- 2 和平懸鈎子; *Rubus hopingensis* Y. C. Liu et F. Y. Lu (薔薇科)
- 3 宜蘭懸鈎子, *Rubus ilanensis* Y. C. Liu et F. Y. Lu (薔薇科)
- 4 小檉葉懸鈎子, *Rubus parvialariiifolius* Hay. var. *laxiflorus* Y. C. Liu et F. Y. Lu (薔薇科)
- 5 清水懸鈎子, *Rubus pseudoacer* Makino var. *flexuosus* Y. C. Liu et F. Y. Lu (薔薇科)
- 6 尾葉懸鈎子, *Rubus urophyllus* Y. C. Liu et F. Y. Lu (薔薇科)
- 7 玉里懸鈎子, *Rubus yuliensis* Y. C. Liu et F. Y. Lu (薔薇科)
- 8 台灣土當歸, *Aralia taiwaniana* Y. C. Liu et F. Y. Lu (五加科)
- 9 瑞里紫槿, *Stellaria monosperma* D. Don var. *taiwaniana* Y. C. Liu et F. Y. Lu (石竹科)

⊃新記錄屬：

- 1 六翅木屬, *Berrya* Roxb. (田麻科)
- 2 鱗蕊藤屬, *Lepistemon* Bl. (旋花科)

⊃新記錄種：

- 1 六翅木, *Berrya ammonilla* Roxb. (田麻科)
- 2 小地耳草, *Hypericum laxum* Koidz. (金絲桃科)

\* Professor & Head, Division of Forestry, Taiwan Provincial Chiayi Technical College of Agriculture.

pubescentiis et punctatis, intus dense tomentosi. Petala alba, late ovata, brevissime unguiculata, 5mm. longa, 4mm. lata, utrinque pubescentia. Receptaculus dense villosus, carpellis glabris. Fructus ellipsoidei, 5mm. long, 4mm. lati. Hab.: Hoping, Taitong Hsien. Leg.: C.H. Ou 2586 (NCUF, Aug. 6, 1974.)

Erect or inclined shrubs, glandular-punctate all over the plants; stems slender, pubescent or puberulous, prickly, the prickles recurved. Leaves thinly chartaceous, 5-7-foliolate, the terminal leaflet rather longer, oblong-lanceolate, 2-4cm. long, 0.7-1.0cm. wide, caudate acuminate at the apex, obtuse or acute at the base, the lateral ones smaller, 1-1.5cm. long, 0.5-0.8cm. wide, sessile, the margins incised duplicate-serrate, midrib and veins impressed and hirsute above, elevated and nearly unarmed beneath, sparsely hirsute or glabrate and punctate on both surfaces; rachis sulcate above, prickly and tomentose; stipules linear-lanceolate or linear, about 1 cm. long. Flowers in terminal or axillary short raceme or solitary, pedicels about 1.5cm. long, pubescent and unarmed, bracts linear, about 2mm. long. Calyx cupular, 5mm. in diameter, the lobes ovate-triangular, about 5mm. long, 3mm. wide, caudate at the apex, densely pubescent and punctate outside and densely tomentose within. Petals white, orbicular-ovate, shortly clawed, about 5mm. long, 4mm. wide, pubescent on both surfaces. Stamens numerous, in several series, filaments about 5mm. long, glabrous, the anthers elliptic. Carpels glabrous, receptacles hirsute. Fruit ellipsoid, up to 5mm. long, 4mm. across.

Endemic, found in the eastern part of Taiwan.

Specimens examined:

Taitong Hsien: C.H. Ou 2586 (Holotype in NCUF).

**Rubus ilanensis** Y.C. Liu et F.Y. Lu, *sp. nov.*

Suffrutex prostratus. Ramuli aculeati floccose tomentosi et dense arachnoidei, aculeis brevibus, recurvis. Folia simplicia, tenuiter coriacea, oblonge lanceolata, 6-10cm. longa, 2-2.5cm. lata, apice acuminata, basi rotundata, supra glabra subtus dense fulvo-arachnoidea ad costis sparse aculeata, venis primariis lateralibus utrinque latere 7-8; petiolis 1.5-3.0cm. longis, aculeatis, arachnoideis; stipulis oblonge lanceolatis, ca. 10mm. longis, 1.5cm. latis, apice laceratis. Racemi axillares dense fulvo-arachnoidei, sparse aculeati; bracteis oblonge lanceolatis, ca. 10mm. longis, 2-3mm. latis, irregulariter incisis. Calyces cupulati, utrinque hirsuti, lobis oblonge triangularibus ca. 3.5mm. longis, 2-3mm. latis, apice aristatis. Petala persistentia, rhomboidaliter orbicularia, utrinque dense hirsuta, ca. 2.3mm. longa, 2.1mm. lata. Stamina numerosa, filamentis sparse breve sericis, connectiva antherarum barbata. Fructus ignoti.

Hab.: Chi-lan-shan, Ilan Hsien. Leg. Y.C. Liu et al 614 (NCUF, Apr. 30, 1971).



Fig. 3 *Rubus ilanensis* Liu et Lu

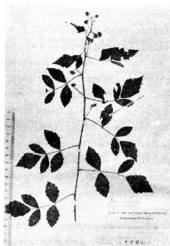


Fig. 4 *Rubus parviaraliifolius* Hay. var. *laxiflorus* Liu et Lu

A straggling shrub, stems densely arachnoid-hairy and floccose tomentose when young, shortly and recurved prickly. Leaves simply, thinly coriaceous, oblong-lanceolate, 7–10cm. long, 2–2.5cm. broad, apex acuminate, base rounded, glabrous above and densely brown-arachnose beneath, the midribs scattered with short recurved prickles beneath, lateral veins 7–9 pairs, inconspicuous above; petioles 1.5–3.0cm. long, prickly and arachnose; stipules oblong-lanceolate, about 1 cm. long, 1.5mm. wide, often lacerate at the tip. Inflorescence a axillary raceme, densely brownish-arachnose and sparsely prickly; bracts oblong-lanceolate, 1 cm. long, 2–3mm. wide, margins irregularly incised. Calyx cupular, densely hirsute on both sides, the lobes oblong-triangular, about 3.5mm. long, 2.3mm. wide, aristate at the top. petals persistent, rhomboid-orbicular, densely hirsute, 2.3mm. long, 2.1mm. wide. Stamens numerous, filaments sparsely sericeous-hairy, anthers with barbate connectives at the top. Fruit not seen.

Endemic, only found in northeastern part of Taiwan.

Note: A distinct species characterized by the simple leaves with regular serrulate margin, brownish cobwebby, axillary racemes as well as densely hirsute petals and bearded connectives.

Specimens examined:

Ilan Hsien: Y.C. Liu et al 614 (Holotype in NCUF).

***Rubus parviaraliifolius*** Hay. var. ***laxiflorus*** Y.C. Liu et F.Y.Lu, var. nov.