

# CONTRIBUTIONS TO THE DICOTYLEDONOUS PLANTS OF TAIWAN (2)

FU-YUAN LU\*

**[Abstract]**: Described as new taxa to Taiwan are 6 new species, 3 new varieties, 2 genera and 3 species of new record. Besides, the existence of two noteworthy species of *Jasminum*, which were formerly treated as uncertained ones, has also been confirmed here.

## 臺灣雙子葉植物新見(二)

呂福原\*

本文中記述台灣雙子葉植物之新分類群計有：六新種，三新變種，二新記錄屬及三新記錄種。此外，對山秀英屬中之二未定種亦予以確認。彼等之學名及新擬之中名如次

⊃新種及新變種：

- 1 灰葉懸鈎子, *Rubus arachnoideus* Y. C. Liu et F. Y. Lu (薔薇科)
- 2 和平懸鈎子; *Rubus hopingensis* Y. C. Liu et F. Y. Lu (薔薇科)
- 3 宜蘭懸鈎子, *Rubus ilanensis* Y. C. Liu et F. Y. Lu (薔薇科)
- 4 小檉葉懸鈎子, *Rubus parvaraliifolius* Hay. var. *laxiflorus* Y. C. Liu et F. Y. Lu (薔薇科)
- 5 清水懸鈎子, *Rubus pseudoacer* Makino var. *flexuosus* Y. C. Liu et F. Y. Lu (薔薇科)
- 6 尾葉懸鈎子, *Rubus urophyllus* Y. C. Liu et F. Y. Lu (薔薇科)
- 7 玉里懸鈎子, *Rubus yuliensis* Y. C. Liu et F. Y. Lu (薔薇科)
- 8 台灣土當歸, *Aralia taiwaniana* Y. C. Liu et F. Y. Lu (五加科)
- 9 瑞里繁縷, *Stellaria monosperma* D. Don var. *taiwaniana* Y. C. Liu et F. Y. Lu (石竹科)

⊃新記錄屬：

- 1 六翅木屬, *Berrya* Roxb. (田麻科)
- 2 鱗蕊藤屬, *Lepistemon* Bl. (旋花科)

⊃新記錄種：

- 1 六翅木, *Berrya ammonilla* Roxb. (田麻科)
- 2 小地耳草, *Hypericum laxum* Koidz. (金絲桃科)

\* Professor & Head, Division of Forestry, Taiwan Provincial Chiayi Technical College of Agriculture.

A typo differt, foliis minoribus, foliolo terminali rhombico 3.5-4.5cm. longo, 2-2.5cm. lato, apice acuminato, basi cuneato, foliolis lateralibus angustioribus 1-1.5cm. latis, floribus pedicellis tomentosis, patentohirsutisque praetermissis glanduloso-hirsutis ultimis 1.5cm. longis.

Hab.: Kwantaushi, Nantou Hsien. Leg.: C.H. Ou 1932 (NCUF., Sept. 20, 1968).

Stems villose, sparsely prickly. Leaves pinnately compound, 3-7-foliolate; terminal leaflet rhomboidal, 3.5-4.5cm. long, 2-2.5cm. wide, acuminate at the apex, cuneate at the base; lateral leaflets narrower, 1-1.5cm. wide, irregularly duplicate-serrate, sparsely hirsute above. Inflorescence a terminal raceme, pedicels up to 1.5cm. long, tomentose and hirsute, very sparsely glandular-setose.

Endemic, known only from the type collection.

Specimens examined:

Nantou Hsien: C.H. Ou 1932 (Holotype in NCUF.).

**Rubus pseudoacer** Makino var. **flexuosus** Y.C. Liu et F.Y. Lu, var. nov.

Differt ab typo foliis crassioribus coriacticis majoribus, 8-18cm. in diametro, petiolis 3-6cm. longis; stipulis ovatis, lanceolatis, 1cm. longis, 2-3cm. latis.

Hab.: Chin-sue Farm, Yu-li, Hwaiien Hsien.

Leg.: F.Y. Lu et C.H. Ou 1262 (NCUF, Aug. 6, 1972)

A erect shrubs, branches flexuose, unarmed or nearly so, glabrous except the terminal buds. Leaves alternate, orbicular in shape, 8-18cm. across, glabrous above but slightly puberulous along the veins, glabrate beneath, palmately 3-7-lobed, central lobes elliptic-ovate, 4-10cm. long, 3-5.5cm. wide, basal lobes smaller, irregularly duplicate-serrate at the margin, thick coriaceous, veinlets slightly impressed above and raised beneath, reticulate, conspicuous, petioles 3-6cm. long; stipules ovate-lanceolate, 1cm. long, 2-3mm. wide.



Fig.5 *Rubus pseudoacer* Makino var. *flexuosus* Liu et Lu

Endemic, found only in the eastern part of Taiwan.

Specimens examined:

Hwaiien Hsien: F.Y. Lu et C.H. Ou 1262 (NCUF, Holotype; TPCA, Isotype).

**Rubus urophyllus** Y.C. Liu et F.Y. Lu, sp. nov.

Suffrutex deciduus. Ramuli glabri, aculeati, in sicco gelatinoso-lepidoti. Folia tenuiter chartacea, late triangule ovata, 6-8cm. longa, 3-6cm. lata,

apice longe caudata, basi truncata vel aliquantum cordata, 3-loba vel haud loba, margine irregulariter serrulata, supra gelatinosolepidoti ad nervos pubescentia, subtus glabra ad nervos sparse aculeata, basi 3-5-nervia, venis primariis lateralibus cum nervis basilaribus utrinque latere 3-4; petiolis ca. 2 cm. longis, glabris sed gelatinose lepidotis; stipulis anguste ovatis, laciniate dentatis, ca. 1cm. longis, glabris sed utrinque gelatinose lepidotis. Paniculae terminales, dense glandulose hirsutae et gelatinosolepidotae, bracteis similibus stipulis. Calyces cupulati, extus glandulose hirsuti et gelatinose lepidote, intus tomentosi, lobis triangule ovatis ca. 5mm. longis, integeris vel leviter laciniatis, erectis. Petala persistentia obovata, ca. 4mm. longa, 2.5mm. lata, apice

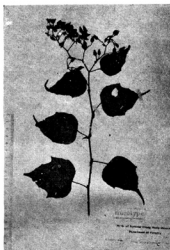


Fig.6 *Rubus urophyllus* Liu et Lu

macronata, utrinque pubescentia.  
 Hab.: Lanshan, Hwalien Hsien. Leg.: Y.C. Liu et C.H. Ou 1720 (NCUF, Julio 15, 1973).

A deciduous shrub, stems prickly, glabrous and gelatinous when dried. Leaves thin chartaceous, broadly triangular-ovate, 6-8cm. long, 3-6cm. wide, caudate-acuminate at the apex, truncate or somewhat cordate at the base, 3-lobed or unlobed, irregularly serrulate, gelatinous-glandular above and glabrous but sparsely prickly along the veins beneath, the lateral veins 3-4 per side, 3-5-nerved at the base; petioles about 2cm. long, prickly and lepidote; stipules oblong-ovate, about 1cm. long, laciniately dentate, glabrous and lepidote on both sides. Inflorescence a large terminal densely glandular-hairy glutinous-lepidote panicle, bracts similar to the stipules. Calyx cupular, densely glandular-hairy and lepidote without, tomentose within, the lobes triangular-ovate, erect, about 5mm. long, entire or slightly lacinate. Petals persistent, obovate, about 4mm. long, 2.5mm. broad, apex mucronulate, pubescent on both surfaces.

Endemic, known only from the type collection.

Note: A distinct species remarkable for the glabrous leaves with gelatinous scaly beneath; glandular hairy and gelatinous-lepidote calyx as well as mucronate petals.

Specimens examined:

Hwalien Hsien: Y.C. Liu et C.H. Ou 1720 (Holotype in NCUF).