

CONTRIBUTIONS TO THE DICOTYLEDONOUS PLANTS OF TAIWAN (4)

Fu-yuan Lu *

[Abstract] Described as new taxa to Taiwan are five new species and two species of new records. Besides, the existence of two noteworthy and controversial species has been confirmed. And, new distribution-area of two noteworthy species has also been cited.

台灣雙子葉植物新見 (四)

呂福原*

本文為著者研究台灣雙子葉植物成果報告之一，記述有五新種及二新記錄種。此外對二種爭議中未定之雙子葉植物，亦予以確認；並由新採集標本之引證中，發現二種植物之新分佈地區，亦一併予以記述。文中乃以傳統分類法將此等植物予以分類與鑑定；並依國際植物命名法規之規定，對諸新種予以命名及拉丁文與英文之記述，同時指定模式標本予以存證；對新記錄及新分佈種，亦分別予以詳細之記載及引證標本。彼等之學名及中名如次：

† 新種：

1. 花蓮芋麻 *Boehmeria hwalienensis* Y. C. Liu et F. Y. Lu (蕁麻科)。
2. 畢祿山芋麻 *Boehmeria pflushanensis* Y. C. Liu et F. Y. Lu (蕁麻科)。
3. 阿里山黃鱗藤 *Berchemia arisanensis* Y. C. Liu et F. Y. Lu (鼠李科)。
4. 臺灣毛茛 *Ranunculus taiwanensis* Y. C. Liu et F. Y. Lu (毛茛科)。
5. 紫花野木瓜 *Stautonia purpurea* Y. C. Liu et F. Y. Lu (木通科)。

‡ 新記錄種：

*Professor & Head, Department of Forestry, Taiwan Provincial Chiayi Institute of Agriculture.

Akebia chingshuiensis Simizu in Quart. Journ. Taiwan Mus. 14:199, f. 1B, 2, 1961; H.L. Li, Woody Fl. Taiwan, 161, 1963; Y.C. Liu, Lig. Pl. Taiwan, 671, 1972; H.L. Li in Fl. Taiwan II:522, 1976.

Photo. 12

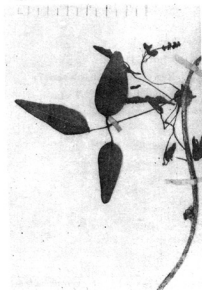


Photo. 12 :

Akebia chingshuiensis
Simizu

A vine, glabrous throughout. Leaves 3-foliolate, long-petioles, the leaflets 2-4 cm. long, 1-1.5 cm. broad, emarginate-mucronulate, the base rounded to broadly cuneate, the margin subentire. Flowers monoecious, sepals 3, purplish red, staminate flowers 10-20 in long racemes, the pedicels about 2-3 mm. long, patent, pistillate flowers fewer, with pedicels 10-13 mm. long, carpels 3-4, glabrous.

Endemic, formerly known only from the type collection from Mt. Chingshui, Hwalien Hsien at 1,800-2400 M., recently found at altitudes of about 2,500 M. near Mt. Arisan, from Tong-pu to Tsu-chung, Chiayi Hsien.

Specimens examined:

Chiayi Hsien: F.Y. Lu et C.H. Ou, 1060 (From Tong-pu to Tsu-chung, NCUF).

Hwalien Hsien: Simizu, 12545 (Isotype in TAI).

Stauntonia purpurea Y.C. Liu et F.Y. Lu, *sp. nov.*

Photo. 13

Scandentissima et volubilis, rami et ramuli teretes, cirriferascentes, glabri. Folia alternata vel ad apicem ramuli annotini 2-3 disposita,



Photo: 13

Stauntonia purpurea

Y. C. Liu et F. Y. Lu

digitatum 4-5-foliolata, petiolis ca. 4.5-6 cm. longis, glabris, foliolis obovato-oblongis, apice acuminatis, basi obtusis vel rotundatis, 4-6.5 cm. longis, 1.5-3.0 cm. latis, margine integris, utraque glabris, subtus pallide purpurea, petiolulis gracillimis, 1.5-3.0 cm. longis. Racemi corymbosa ad basin ramuli hornotini vel ad axillas foliorum hornotinorum fasciculi, penduli gracillimi glabri, 3-5 cm. longi, pedicellis 1-1.5 cm. longis. Flores masculi: sepala purpurea, exteriore 3, lanceolata 1.1 cm. longa, 4 mm. lata, apice acuminata, interiore 3, anguste linearia, 1.1 cm. longa, 1.3 mm. lata; columnastaminialis 7 mm. longa, filamentis toto antheris connatis, apice appendiculatis, appendiculis 2 mm. longis; rudimentum connatis; carpellorum 3, cylindricum, 1.3 mm. longum. Flores feminei: sepala purpurea, majora, exteriore 3, lanceolata, 1.95 cm. longa, 5 mm. lata, apice acuminata, interiore 3 linearia, 1.7 cm. longa, 2.6 mm. lata; carpella 3, lineari-cylindrica, 4 mm. longa, glabra, apice stigmatifera, staminoidia 6, sagittata.

Hab.: In monte Chi-lan-shan, Ilan Hsièn.

Leg.: F.Y. Lu et C.H. Ou 592 (NCUF, Apr. 29, 1971).

A climbing shrub, entirely glabrous. Leaves alternate or 2-3-fascicled on the apex of the current years branchlets, palmately 4-5-foliolate, petioles 4.5-6.0 cm. long, leaflets subequal, petiolulate, membranous, obovate-oblong, 4-6.5 cm. long, 1.5-3.0 cm. wide, the apex acuminate,

the base obtuse or rounded, the margins entire, glabrous, green and lustrous above, paler and purplish beneath; petiolules slender, 1.5-3 cm. long. Flowers in corymbose-racemes, axillary and fascicled on the current year's branches, purplish-red, pendulose, peduncles very slender, glabrous, 3-5 cm. long, pedicels 1-1.5 cm. long. Staminate flowers smaller, sepals 6, in 2 series, acuminate, the outer ones lanceolate, 1.2 cm. long, 4 mm. wide, the inner ones linear, 1.1 cm. long, 1.3 mm. wide, staminal column 7 mm. long, the filaments totally connate, anthers with appendiculate apex, the spur 2 mm. long, rudimentary ovaries 3, cylindrical, 1.3 mm. long. Pistillate flowers larger, outer sepals 1.95 cm. long, 5 mm. wide, inner sepals 1.7 cm. long, 2.6 mm. wide staminodes 6, sagittate, carpels 3.4 mm. long, the stigma capitate.

Endemic, found only from the type collection.

Specimens examined:

Ilan Hsien: Y.C. Liu et al 592 (Holotype in TPCA, Isotype in NCUF).

Note: A distinct species characterized by the purplish-red flowers in pendulous corymbose-racemes fascicled on the current year's branches, as well as smaller, membranous leaves purplish green beneath.

Compositae

Ixeris stolonifera A. Gray, Bot. Jap. 369, 1859; Kitamura in Bot. Mag. Tokyo XLII:287, 1935; Hara in Bot. Mag. Tokyo LII:122, 1938. Enum. Sperm. Jap. II:218, 1952; Kitamura et al, Col. Ill. Herb. Pl. Jap. 1:7, t.2, no.13, f.2-2, 1962.

Lactuca stolonifera (A. Gray) Benth. ex Maxim. in Bull. Acad. St. Pet. XII:533, 1874; Makino et Nemoto, Fl. Jap. rev. ed. 1246, 1931; Makino, New Ill. Fl. Jap. 685, f. 2737, 1961. **Photo. 14**

Small herb, glabrous throughout, stems slender, creeping, stoloniferous. Leaves long-petiolate, leaf-blades ovate, membranous, 7-20 mm. long, 5-15 mm. wide, entire or subentire and with few obsolete minute teeth at the margin, obtuse at the apex, cuneate at the base, petioles 10-35 mm. long. Heads with slender pedicels, yellow, 2-2.5 cm. across, involucre 8-10 mm. long, inner phyllaries linear, 9-10 pieces, outer ones much smaller, 2-3.5 mm. long, pedicels 5.5-10 cm. long. Achenes 4-6 mm. long, rostrate at the apex, the beak 2-3 mm. long, pappus white, 4-5 mm. long.

Korea, Japan and Central China, recently found at high altitudes in the central part of Taiwan.

Specimens examined: