

CONTRIBUTIONS TO THE DICOTYLEDONOUS PLANTS OF TAIWAN (2)

FU-YUAN LU*

[Abstract]: Described as new taxa to Taiwan are 6 new species, 3 new varieties, 2 genera and 3 species of new record. Besides, the existence of two noteworthy species of *Jasminum*, which were formerly treated as uncertained ones, has also been confirmed here.

臺灣雙子葉植物新見(二)

呂福原*

本文中記述台灣雙子葉植物之新分類群計有：六新種，三新變種，二新記錄屬及三新記錄種。此外，對山秀英屬中之二未定種亦予以確認。彼等之學名及新擬之中名如次

⊃新種及新變種：

- 1 灰葉懸鈎子, *Rubus arachnoideus* Y. C. Liu et F. Y. Lu (薔薇科)
- 2 和平懸鈎子; *Rubus hopingensis* Y. C. Liu et F. Y. Lu (薔薇科)
- 3 宜蘭懸鈎子, *Rubus ilanensis* Y. C. Liu et F. Y. Lu (薔薇科)
- 4 小檉葉懸鈎子, *Rubus parvaraliifolius* Hay. var. *laxiflorus* Y. C. Liu et F. Y. Lu (薔薇科)
- 5 清水懸鈎子, *Rubus pseudoacer* Makino var. *flexuosus* Y. C. Liu et F. Y. Lu (薔薇科)
- 6 尾葉懸鈎子, *Rubus urophyllus* Y. C. Liu et F. Y. Lu (薔薇科)
- 7 玉里懸鈎子, *Rubus yuliensis* Y. C. Liu et F. Y. Lu (薔薇科)
- 8 台灣土當歸, *Aralia taiwaniana* Y. C. Liu et F. Y. Lu (五加科)
- 9 瑞里繁縷, *Stellaria monosperma* D. Don var. *taiwaniana* Y. C. Liu et F. Y. Lu (石竹科)

⊃新記錄屬：

- 1 六翅木屬, *Berrya* Roxb. (田麻科)
- 2 鱗蕊藤屬, *Lepistemon* Bl. (旋花科)

⊃新記錄種：

- 1 六翅木, *Berrya ammonilla* Roxb. (田麻科)
- 2 小地耳草, *Hypericum laxum* Koidz. (金絲桃科)

* Professor & Head, Division of Forestry, Taiwan Provincial Chiayi Technical College of Agriculture.

Flowers in terminal cymose panicles, calyx-lobes subulate, 1-2mm. long. Fruit black, globose, about 6mm. across, pedicels slender, 1-1.5cm. long.

China. Taiwan, found in the central part at low altitudes.

Note: Dr. H.L. Li treated *Jasminum taiwanianum* Masamune as a synonym of *J. lanceolarium* Roxb. in "Woody Fl. Taiwan (1963)". As a matter of fact, he overlooked the different in nervation of the leaflets as well as some other characters. Several specimens concerned have been carefully examined and it is here confirmed to be conspecific with *J. urophyllum* and distinct from *J. lanceolarium*.

Specimens examined:

Hsinchu Hsien: C.F. Hsieh 1269 (TAI, form Madala-chi, on Aug. 10, 1972).

Chiayi Hsien: C.H. Chen et al C10635 (TPCA & NCUF, from Chiayi, Sept. 1971)

Stellaria Linn.

Stellaria monosperma Hamilt. ex D. Don var. **taiwaniana** Y.C. Liu et F.Y.

Lu, var. nov.

Affine *Stellaria monosperma* var. *japonica*, sed foliis late ovato-lanceolatis, 2.5-4.5cm. longis, 1-2.5cm. latis, apicibus acuminatis, basibus obtusis, petiolicis brevioribus 2-4mm. longis, exque statim differt.

Hab.: Shui-li, Chiayi Hsien. Leg.: C.H. Ou 2850 (NCUF, Sept. 16, 1974).

A diffusely branched herb, stems tufted, slender, terete or obsoletely 4-angled, pubescent in 1 or 2 lines. Leaves broadly ovate-lanceolate, 2.5-4.5cm. long, 1-2.5cm. wide, the apex acuminate, the base obtuse, minutely crisped on the margin, petioles 2-4mm. long. Flowers in loosely flowered, glandular-pubescent cymes; bracts leafy, glandular-ciliate; sepals lanceolate, acuminate, 2-3 mm. long; petals white, bifid, 1.5mm. long, lobes acute, 0.5mm. long; stamens 5. Capsules oval, shorter than the sepal, indehiscent, containing one globular, chesnut-brown smooth seed of 1.5-2mm. long.

The species with several varieties widely distributed in the tropical to temperate Asia, India, Indo-China to Japan. The variety is confined to Taiwan only.

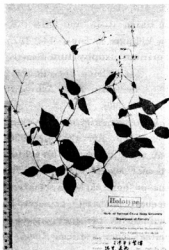


Fig. 13 *Stellaria monosperma* Hamilt. var. *taiwaniana* Liu et Lu

Note: A distinct variety, characterized by the much smaller, broadly ovate-lanceolate leaves and smaller flowers and seeds, recently found in moist wood in the central part at medium altitudes of Taiwan.

Specimens examined:

Chiayi Hsien: C.H. Ou 2850 (Holotype in NCUF).

Lepistemon Blume

Lepistemon Bl., Bijdr. 722, 1825; Ooststr. in Blumea 5:340, 1943, Fl. males. 4:489, f. 56, 1953.

Lepidostemon Hassk., Cat. Hort. Bog. 140, 1844.

Nemodon Griff., Not. 4:286, 1854.

Ipomoea series *Urceolata* Benth., Fl. Austr. 4:427, 1869.

Herbaceous or woody twiners, usually hairy. Leaves petioled, ovate to orbicular, often cordate at the base, entire to 3- or 5-lobed, herbaceous. Flowers in axillary, dense, sessile or shortly peduncled cymes, bracts small, caducous; sepals 5, subequal, herbaceous or subcoriaceous, acute or obtuse; corolla regular, yellowish white or white, urceolate, with a shortly 5-lobed limb; medpetaline bands hairy outside; stamens and style included, filaments inserted near the base of the corolla, dilated in their basal portion into large concave scale, arched over the ovary; pollen grains globular, spinous; disk large, annular or cupular; ovary glabrous or hairy, 2-celled, each cell with 2-ovules; style 1, very short; stigma 2, capitate. Capsules 4-valved, with 4 or less glabrous or puberulous seeds.

About 10 species in tropical Africa, Australia and Asia, one in Taiwan.

Lepistemon binectariferum (Wall.) O.K. var. **trichocarpum** (Gagnep.)

Ooststr. in Blumea 5:343, 1943, Fl. Males. 4:490, 1953; Hatsusima, Fl. Ryuk. 503, 1971.

Lepistemon trichocarpum Gagnep. Not. Syst. 3:152, 1915.

Lepistemon binectariferum sensu Merr., Fl. Manila 383, 1912, *non* O.K.

Lepistemon obscurum Merr., Enum. Philip. Pl. 3:364, 1923.

Herbaceous twiner, 1-3M. high; stems densely retrose brown pilose. Leaves broadly ovate, 5-18cm. by 5-15cm., deeply cordate at the base, acuminate and mucronate at the apex, margin entire or irregularly dentate with one or more large teeth or shallowly to deeply 3-5-lobed, with acute or acuminate lobes, appressed pilose on both surfaces, young leaves nearly tomentose with a golden-brown tomentum; petioles 2.5-16cm. long, hairy like the stem. Flowers in few- to many-flowered, axillary cymose clusters, much shorter than the petioles, peduncles short or absent, pedicels up to 7mm. long, glabrous or sparsely pi-