

## Contributiones ad Floram Formosanam, IV.

(Continuatio ab voluminis XX. No. 107. pag. 105)

Yoshimatsu YAMAMOTO

(18) **Oenanthe Kudoi** SUZUKI et YAMAMOTO, sp. nov. (Fig. Phot.)

Caulis gracilis, pauce ramosus, suberectus, circ. 40 cm longus, striatus. Folia alterna, circumscriptione deltoidea, bipinnata, cum petiolo maxima

10 cm longa et 7 cm lata, superiore gradatim minora, pinnis pinnulisque lanceolatis pinnati-partitis, partibus oblanceolatis 2-4 mm longis 1 mm latis, petiolis maximis 3 cm longis basi dilatatis et caulem semiamplectantibus superiore brevioribus. Umbella axillaris, 4 cm longa, 3-4 cm lata, 3-4-radiata, pedunculis 2-3 cm longis, radiis 1.0-1.4 cm longis minute hirsutis; umbellula circ. 1 cm in diametro, 10-15-radiata, basi bracteolata, bracteolis filiformibus 2 mm longis, radiis 3 mm longis pilis minutis conspersis. Flores

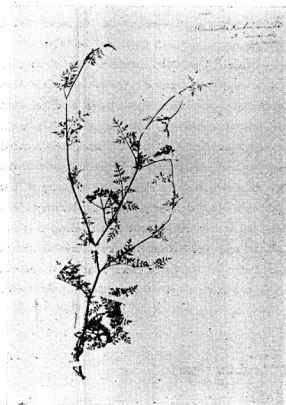


Fig. *Oenanthe Kudoi* SUZUKI et YAMAMOTO (Phot.)

parvi, 2 mm in diametro, ovariis obconicis 1 mm longis 0.7 mm in diametro, calycis lobis 5 ovato-dentatis, dentibus 0.5 mm longis 0.3 mm latis, petalis

5 albis obovatis apice caudatis basi breviter stipitatis 1.2 mm longis 1 mm latis, caudis 0.2 mm longis obcordatis reflexis, stipitibus erectis 0.2 mm longis, staminibus petalis plus minusve longioribus, stylis 2 filiformibus longioribus 1.5 mm longis basi conico-rostratis. Fructus elliptici vel oblongo-cylindrici, 2.5 mm longi, 1.5 mm in diametro, jugis corticosis.

NOM. JAP. *Kudo-Zeri* (nov.)

HABIT. In monte Taihei, leg. S. SUZUKI, 27 Julio 1929 (No. 1066).

Typus.

DISTRIB. Endemica in Formosa.

NOTA. Haec planta foliorum pinnis-pinnulisque linearibus vel oblanceolatis, umbellis 2-4-radiatis notabilis. In honorem manibus Prof. Dr. Y. KUDO, grato animo nomen dedicamus.

(19) **Rubus fraxinifolius** POIR. ENCYCL. VI. (1804) p. 242; MIQ. Fl. Ind. Bat. I.—1. (1855) p. 376; MERR. in Philip. Journ. Sci. I. (1906) Suppl. p. 60; MAXIM. in Mém. Biol. VIII. (1871) p. 391; MATSUM. et HAYATA, ENUM. PL. FORMOS. (1905) p. 121; HAYATA, Fl. Mont. Formos. (1908) p. 80, et Ic. Pl. Formos. I. (1911) p. 227, l. c. VII. (1918) p. 29, fig. 22.

var. **Yushuni** SUZUKI et YAMAMOTO, var. nov.

Folia longe petiolata, impari-pinnatim vulgo 9-11-foliolata, cum petiolo 20-30 cm longa, 8-10 cm lata, petiolis spinosis; foliola brevi-petioluta, lanceolata vel ovato-lanceolata, 5-7 cm longa, apice lineari-acuminata, basi subcordata vel rotundata, margine duplicato-serrulata, pagine supra ad costam et venas pilosa, subtus ad costam et venas pubescentia et ad costam 3-5-spinosa, costâ et venis supra sulcatis, venis lateralibus primariis angulis 30°-50° divaricatis, petiolulis brevissimis 1.5 mm longis pubescentibus. Flores axillares, glomerati, capitulatiq. Fructus pedicellati, globosi, hirsuti, 7-8 mm in diametro, pedicellis brevibus vulgo 4 mm longis.

NOM. JAP. *Yushun-ichigo* (nov.)

HABIT. In monte Taihei, leg. S. SUZUKI, 21 Julio 1929 (No. 643)—Typus; ibidem, leg. S. SUZUKI, 7 Aug. 1929; ibidem, 4 Jul. 1929 (No. 636).

NOTA. Haec varietas e Typo specie statim differt, foliolis vulgo cum jugis 9-11, fructibus axillaribus fasciculatis. In honorem manibus Prof. Dr. Yushun KUDO, grato animo nomen dedicamus.